



# Housing Issues

For parents who are separating



## Where will we live?

When you and your partner decide to separate, you have to make a decision about where you will live. One of you may decide to stay in the home and the other partner may move out; you may both leave and find new homes; or you may carry on living in the same house together, but not as a couple.

Many factors will determine your housing choices, for example:

- The children – it is most important for them to have somewhere suitable to live when they are with each of you
- Your current housing position – whether you rent, own or share your home
- Your entitlement – whether you are the sole or joint owner or tenant
- Your finances – whether you can afford to remain in your current home.

## Who can help?

It is really important to make the right decisions about your housing needs and it's a good idea to get some specialist advice. There are some organisations who can provide you with help and information, such as Shelter or your local Citizens Advice Bureau. (See other organisations on the back of this sheet).

If you own your own home, however, it's probably best to see a solicitor for legal advice. Most solicitors will give a free half hour consultation. It may also help you to talk through how you are feeling about the break-up with someone such as a **relate** counsellor.

## What about the children?

The choices about where you live will obviously affect your children. You need to think about the impact if they have to change school, will they still be able to see their friends and wider family members? It's important for them to maintain a quality relationship with you both.



[www.separating-parents.co.uk/rugby-warks](http://www.separating-parents.co.uk/rugby-warks)



### Relate Warwickshire

Tel: 01788 565675 / 01926 403 340

Website: [www.rugbyrelate.org.uk](http://www.rugbyrelate.org.uk)  
[www.relatesouthwarwickshire.org.uk](http://www.relatesouthwarwickshire.org.uk)



### Shelter

Tel: 0808 800 4444

Website: [www.shelternet.org.uk](http://www.shelternet.org.uk)

### Community Legal Advice

Tel: 0845 345 4 345

Website: [www.communitylegaladvice.org.uk](http://www.communitylegaladvice.org.uk)

### Council Housing

(Rugby)

Tel: 01788 533533

Website: [www.rugby.gov.uk](http://www.rugby.gov.uk)

(Nuneaton & Bedworth)

Tel: 02476 376 406

Website: [www.nuneatonandbedworth.gov.uk](http://www.nuneatonandbedworth.gov.uk)

(North Warwickshire)

Tel: 01827 715 341

Website: [www.northwarks.gov.uk](http://www.northwarks.gov.uk)

(Warwick)

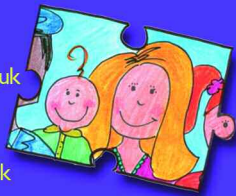
Tel: 01926 410 410

Website: [www.warwickdc.gov.uk](http://www.warwickdc.gov.uk)

(Stratford on Avon)

Tel: 01789 267 575

Website: [www.stratford.gov.uk](http://www.stratford.gov.uk)



### FCH Housing & Care

Tel: 02476 317 125

Website: [www.fch.org.uk](http://www.fch.org.uk)

### Citizens Advice Bureau

Tel: 0844 855 2322

Website: [www.adviceguide.org.uk](http://www.adviceguide.org.uk)

SEPARATING PARENTS WORKING TOGETHER  
[www.separating-parents.co.uk/rugby-warks](http://www.separating-parents.co.uk/rugby-warks)



**relate**  
the relationship people

 **Warwickshire**  
County Council